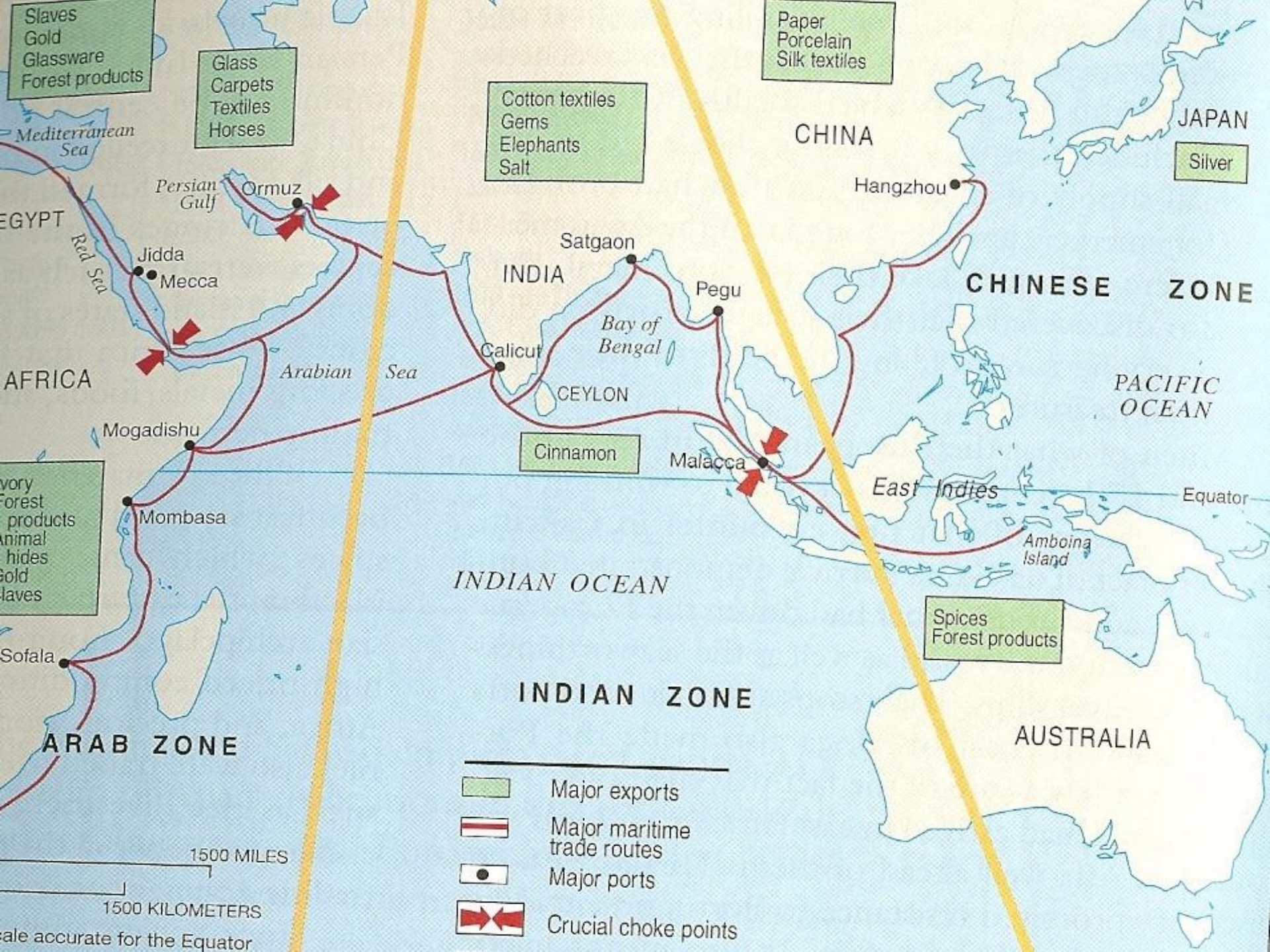


Asian Gunpowder Empires notes



Ming China—1368-1644

- Drove out the Mongols
- Conquered neighbors
- Scholar-gentry restored
- Civil service exam reinstated
- Confucianism increased (strict obedience to state)
- Built Forbidden City



Examination Cells for civil service exams—

examinations lasted twenty-four and even seventy-two hours; they were conducted in spare, isolated examination rooms



Cheat "Shirt" during Civil Service Exam



Cheat "Shirt" during Civil Service Exam

Ming Architecture—The Forbidden City







BeiHai

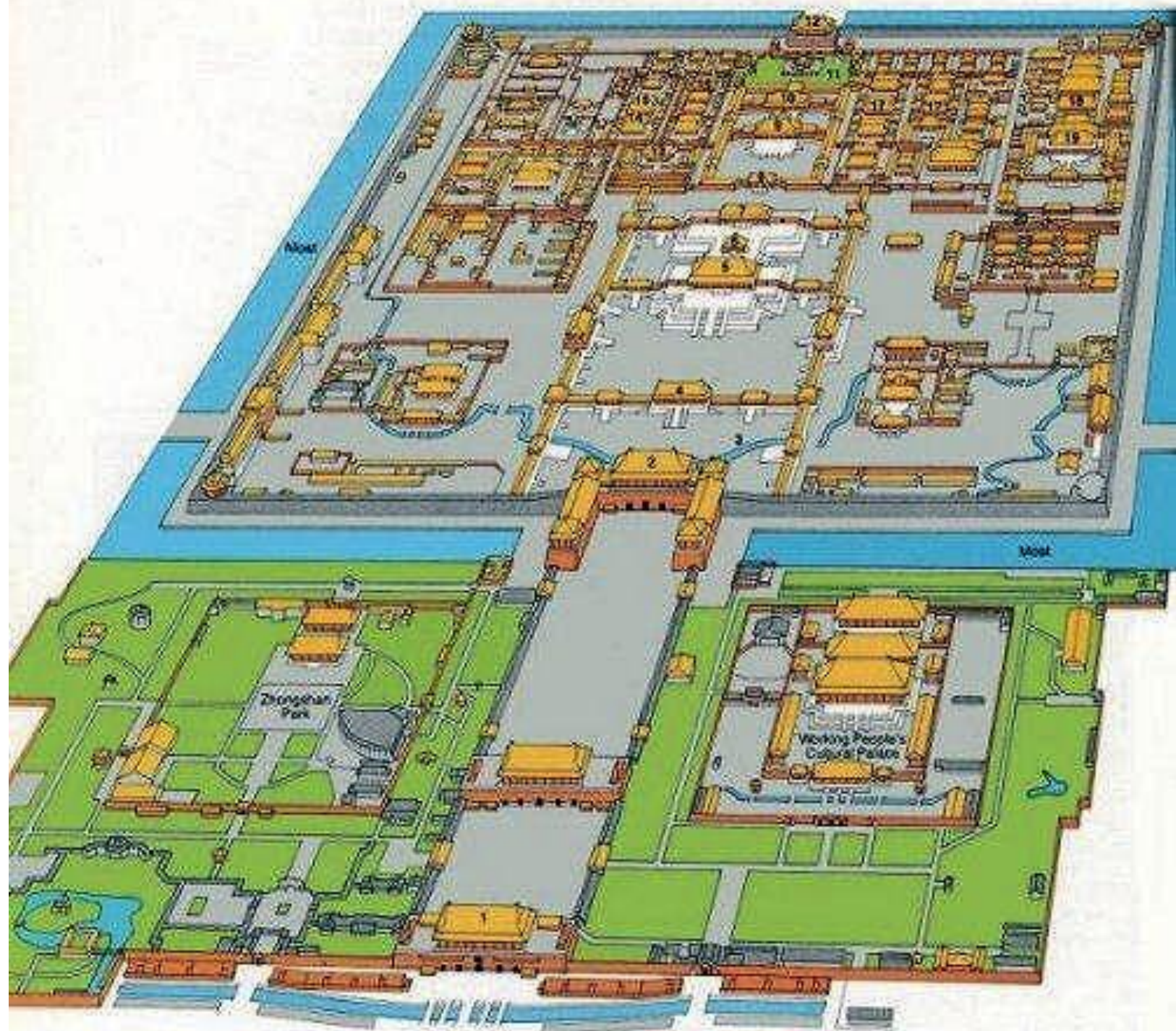
JingShan Park

WuMen

ZhongShan Park

Workers Park

Tian'AnMen





















Starbucks—2000-2007

STARBUCKS
COFFEE

星巴克咖啡

灭火器箱

FIRE EXTINGUISHER CASE

火警119

FIRE 119

Ming Exploration

- **1405-1423 Zheng He—explorer**
 - Indian Ocean, Arabian Sea, Persian Gulf
- **By 1430s stopped exploring b/c it cost too much**



Zheng He

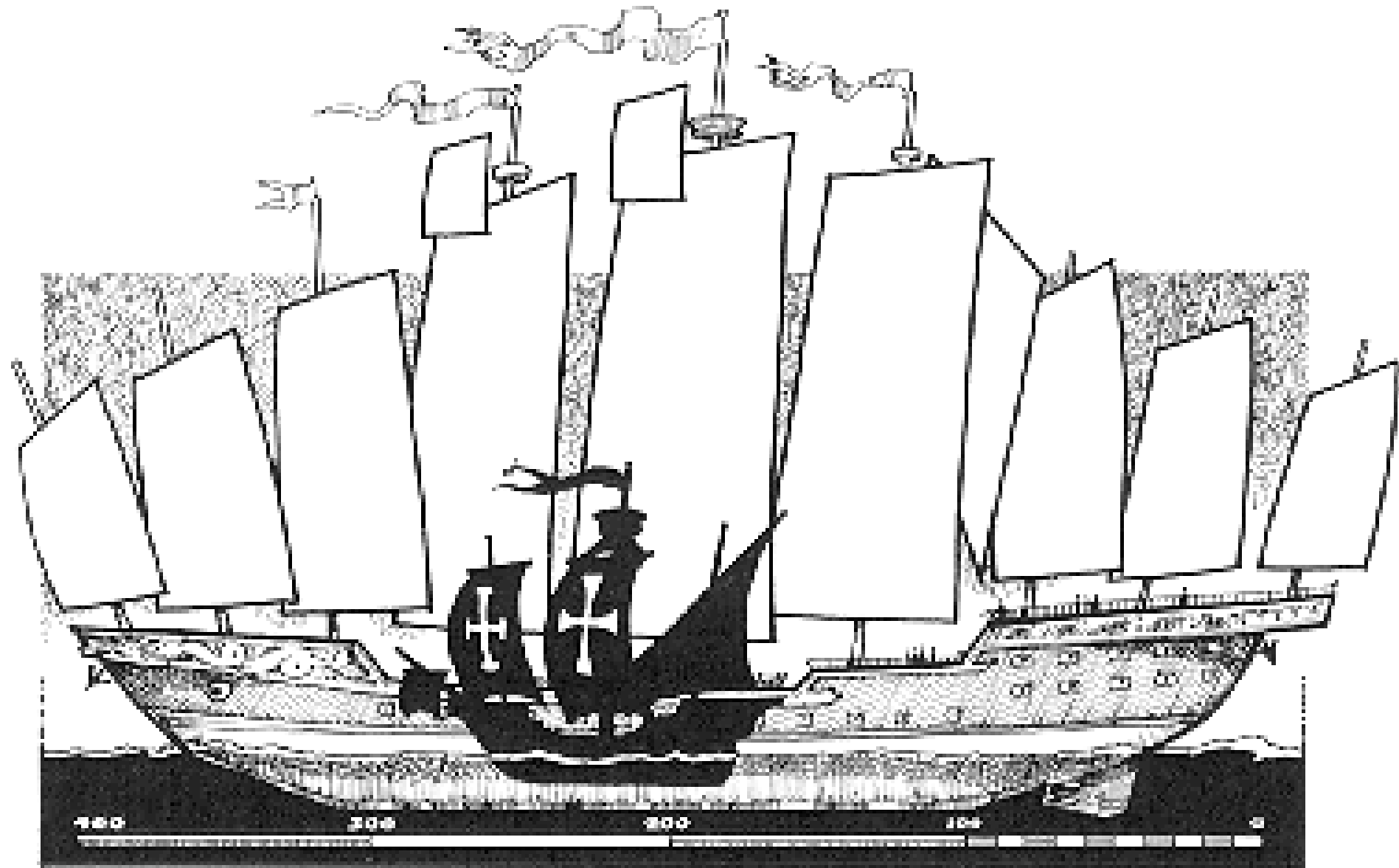


15th-16th C. Chinese Ships

Zheng He

| Navigator | Number of Ships | Number of Crew |
|-------------------------------|------------------------|-----------------------|
| Zheng He (1405 - 1433) | 48 to 317 | 28,000 |
| Columbus (1492) | 3 | 90 |
| Da Gama (1498) | 4 | ca. 160 |
| Magellan (1521) | 5 | 265 |

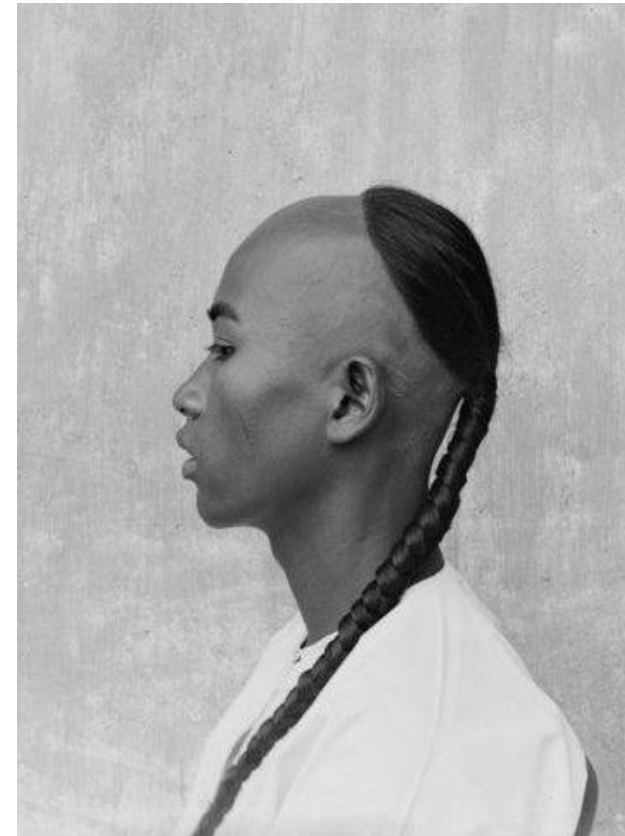
Zheng He's ship—400 ft.
Columbus's ship—85 ft.



**How would it change things if
Zheng He did in fact reach
America first?**

Qing Dynasty Begins

- 1644—northern nomads, **Manchus**, conquered Ming
- **Qing Dynasty** rules until early 20th C. (last Chinese Dyn.)
 - Forced Chinese men to wear hair in a queue
 - Kept Confucian beliefs
 - Expanded empire







Queue hairstyle consisted of the hair on the front of the head being shaved off above the temples and the rest of the hair braided into a long ponytail, or queue.

The ponytail was never to be cut for it would justify execution as treason



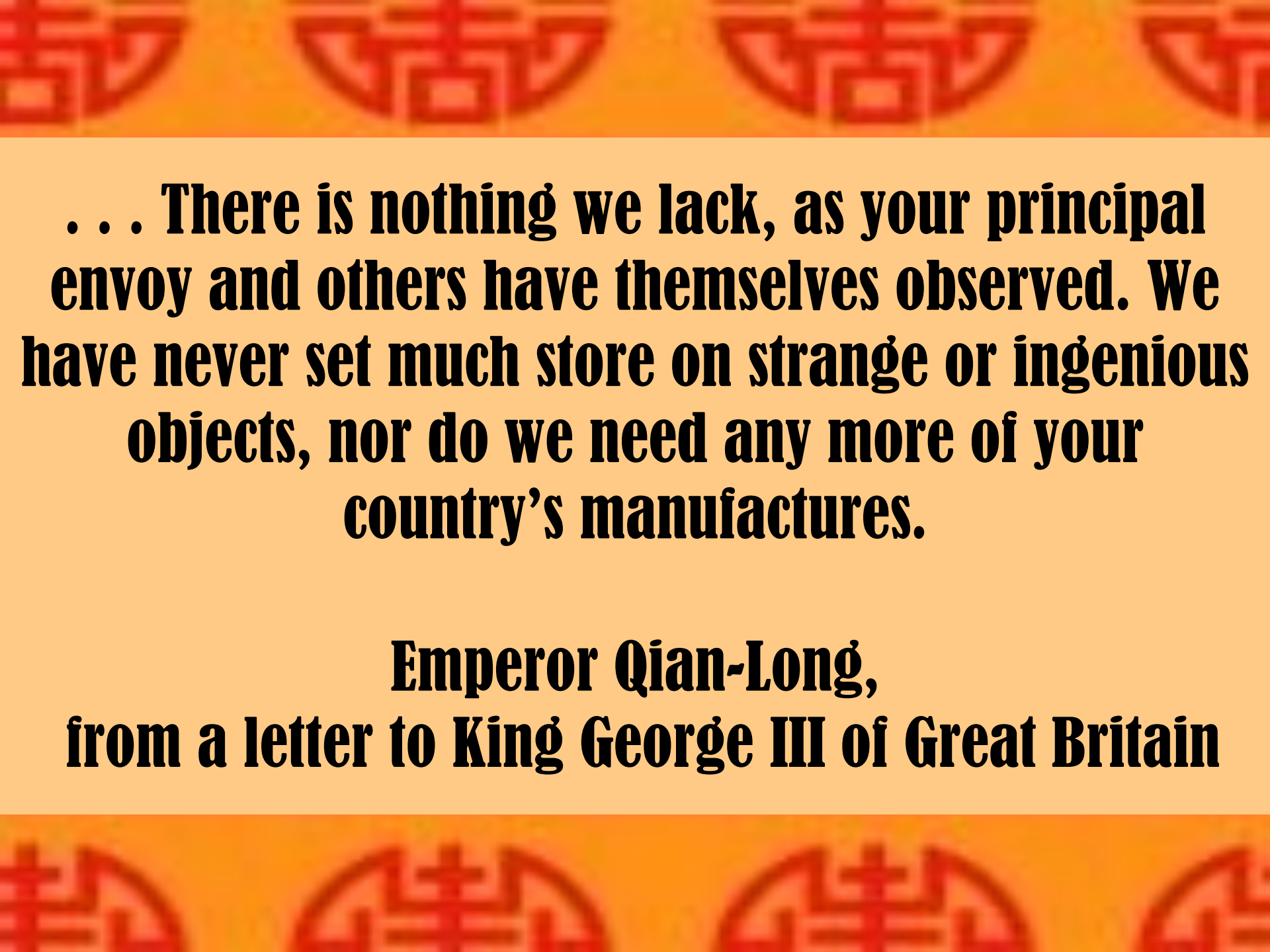
Dowager Empress Cixi

- **6" high platform shoes (no bound feet—Manchu didn't do this)**
- **6" long gold nail protectors—long fingernails denote her high status (her nails were over 4" long)**

Foreigners in China

- **Isolation!**
- **Late 16th C. Jesuits allowed to enter China**
 - Jesuit Matteo Ricci—learned Chinese lang. & dressed like the Chinese
- **Only allowed to trade at 2 port cities**
 - British & Dutch wanted to end trade restrictions





**. . . There is nothing we lack, as your principal
envoy and others have themselves observed. We
have never set much store on strange or ingenious
objects, nor do we need any more of your
country's manufactures.**

**Emperor Qian-Long,
from a letter to King George III of Great Britain**

Tokugawa Shogunate (1603-1868)

- **1603**—Tokugawa family gained title of shogun
- **“Great Peace”** = Tokugawa Japan
- Centralized gov.



Japanese Feudalism

emperor

Shogun

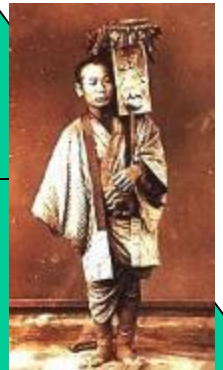
**Daimyo
(lord)**

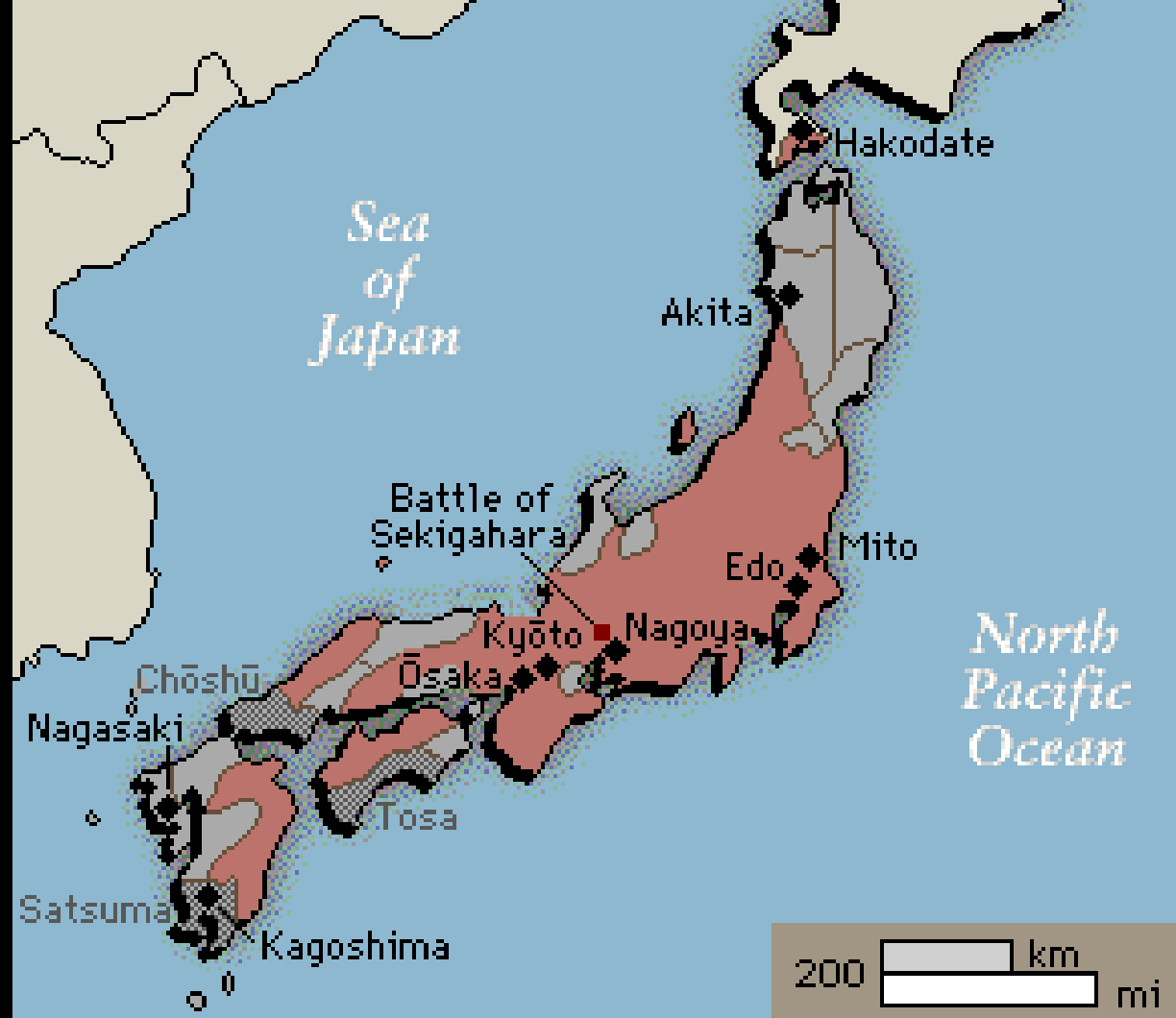
Samurai


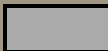

Farmers

Craftsmen, Artisans

Merchants





-  Domains of Tokugawa shogun and allied daimyo (feudal lords)
-  Domains of "outside daimyo," traditional rivals of the shogun
-  Domains allied against the shogunate at the end of the Tokugawa period

European Influence in Japan

- **1543—Portuguese sailors shipwrecked in Japan**
- **Europeans brought Western techn.**
 - **Clocks & firearms**
 - Helped gain authority



Catholicism

- **At 1st, protected Catholic missionaries**
- **1580s—seen as threat by Buddhists, so ordered to leave**
- **After 1580s = isolated—only allowed in Dutch and Chinese**

**Built castles like in West
Stronger Castles to withstand gunpowder**





Geishas = special courtesans, highly valued for musical, artistic, and conversational skills

Geishas were licensed entertainers

